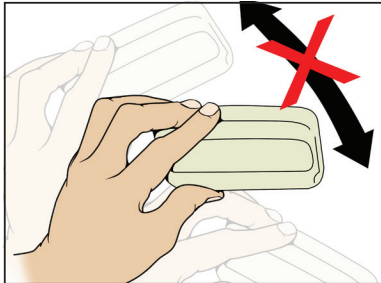


Installation Instructions for Your Interior-Mounted Electronic Toll Collection Tag

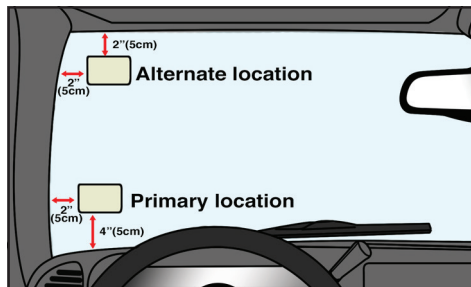
These instructions are for tags that are read by a reader system that is mounted overhead.

Do Not Present The Tag By Holding In Hand



- Tag will NOT work if not mounted on windshield.

1 Choose a Location for Your Tag



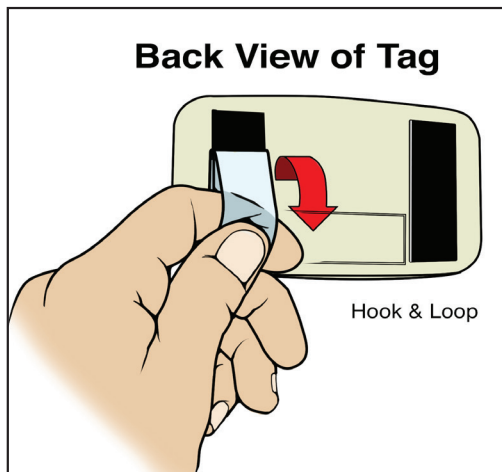
- Place on inside of windshield out of driver's line of sight.
- **Best Location:**
4 inches from bottom, 2 inches from left
- **Alternate Location:** If you have another tag or inspection sticker, place in upper left corner.

2 Prep Your Windshield

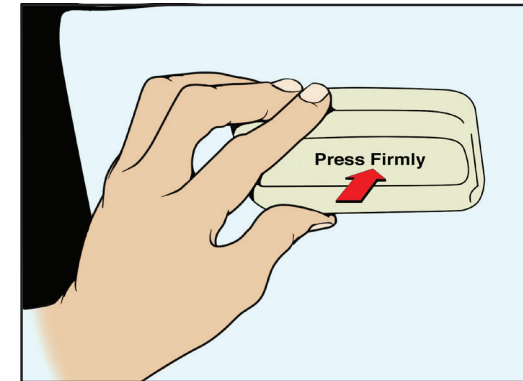
- Windshield should be at least 50°F (10°C).
- Use heater/defroster, if necessary.
- Clean and wipe windshield dry before installing tag.



3 Peel off Tape

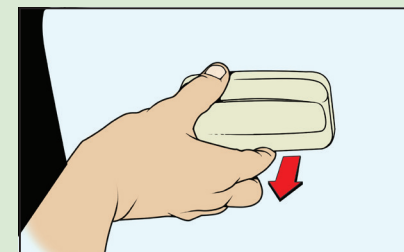


4 Press Tag Firmly Against Windshield a Few Seconds in Chosen Location



- Enjoy your Electronic Toll Collection Tag, and drive safely!

Removing Tag



- **Grasp along top or bottom edge and pull slowly.**